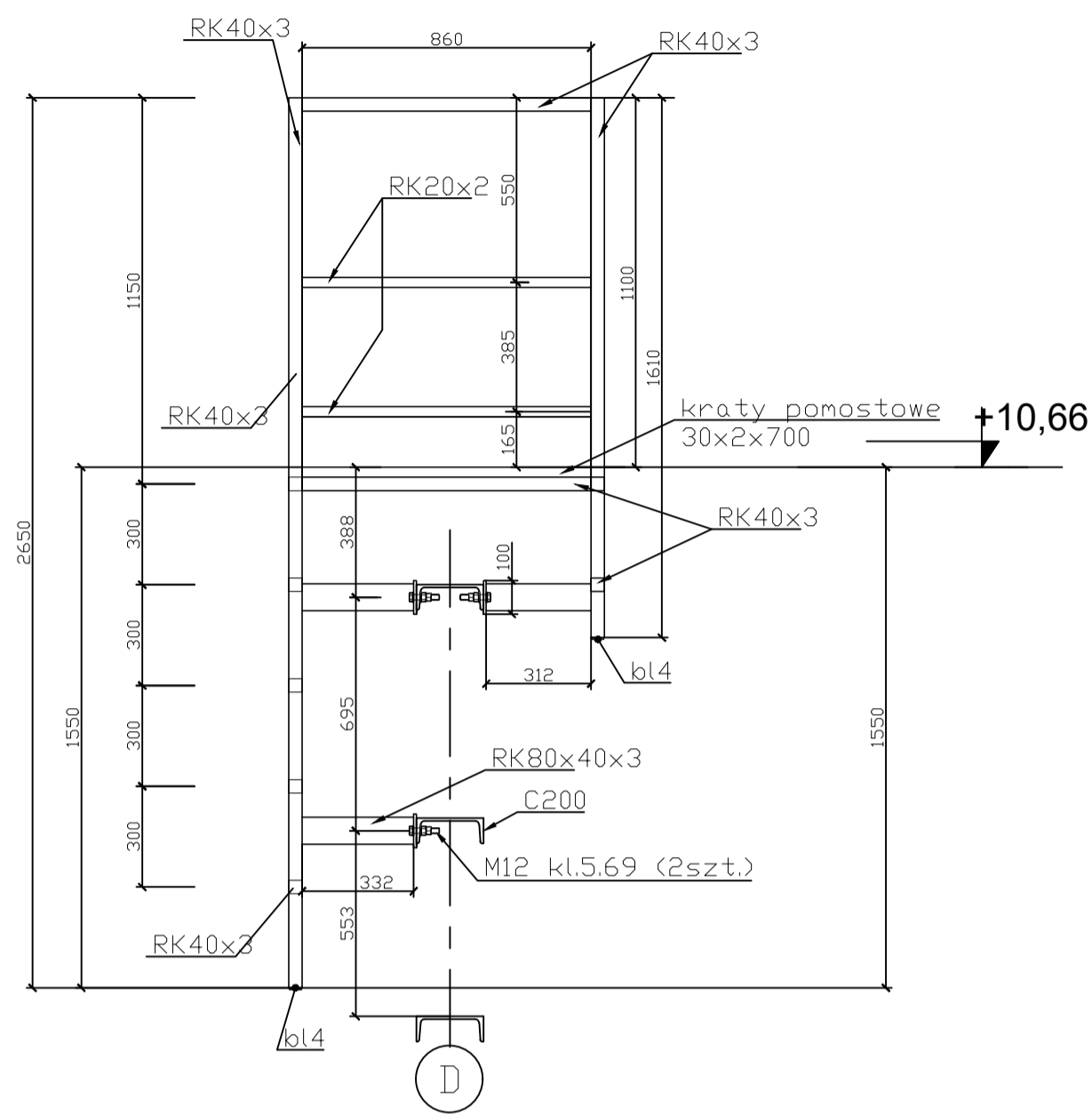
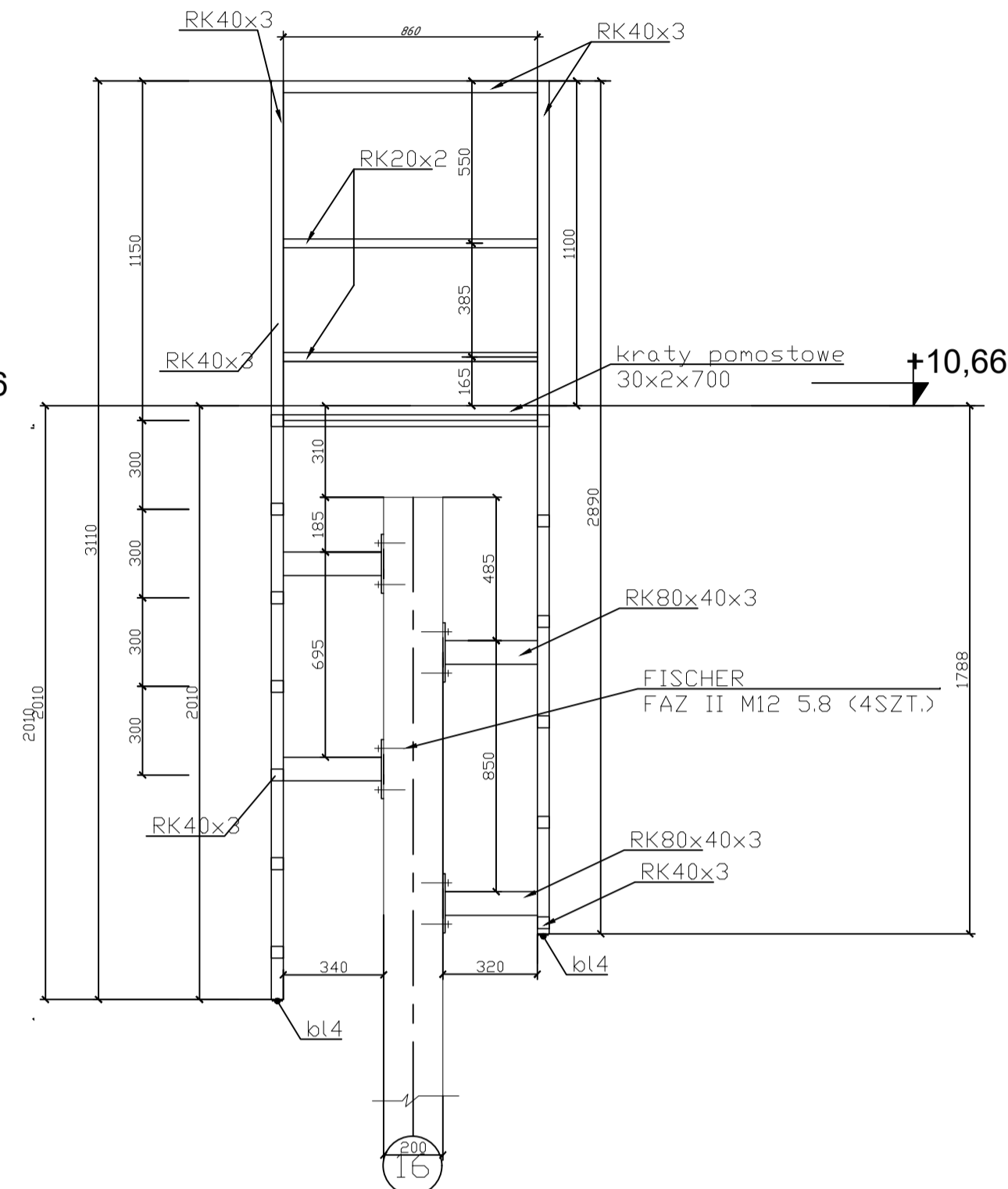


Architectural floor plan of a building, oriented with North at the top. The plan is divided into a grid system with letters A through M on the left and numbers 15, 16, 17 at the bottom. The rooms are numbered 1 through 17. The plan includes various architectural details such as walls, doors, windows, and furniture. A staircase is located in the upper right corner. The plan is oriented with North at the top.

A diagram of a rectangular floor. The horizontal dimension is labeled 940 and the vertical dimension is labeled 700. The rectangle is outlined with a double line, and there are small squares at the corners indicating right angles.



A diagram of a rectangular frame. The top horizontal dimension is labeled 940. The right vertical dimension is labeled 700. The frame consists of a central white rectangle surrounded by a black border.



Ilość [szt.]	Nazwa	Profil	Długość [mm]	Masa		
				Jednostkowa [kg/m]	Elementu [kg]	Całkowita [kg]
1	DRABINA D-1	RK80X40X3	2050	5,29	11	10,84
1		RK40X3	16860	3,41	57	57,49
1		RK20X2	3440	1,1	38	37,84
1	DRABINA D-2	kratki pomostowe 30x2x700				
2		RK80X40X3	2640	5,29	14	27,93
2		RK40X3	24600	3,41	84	167,77
2		RK20X2	3440	1,1	38	76,00
2		kratki pomostowe 30x2x700				

Masa łączna elementów [kg]	377,88
Dodatek na spoiny 5%	18,9
Masa łączna jednego elementu [kg]	396,77

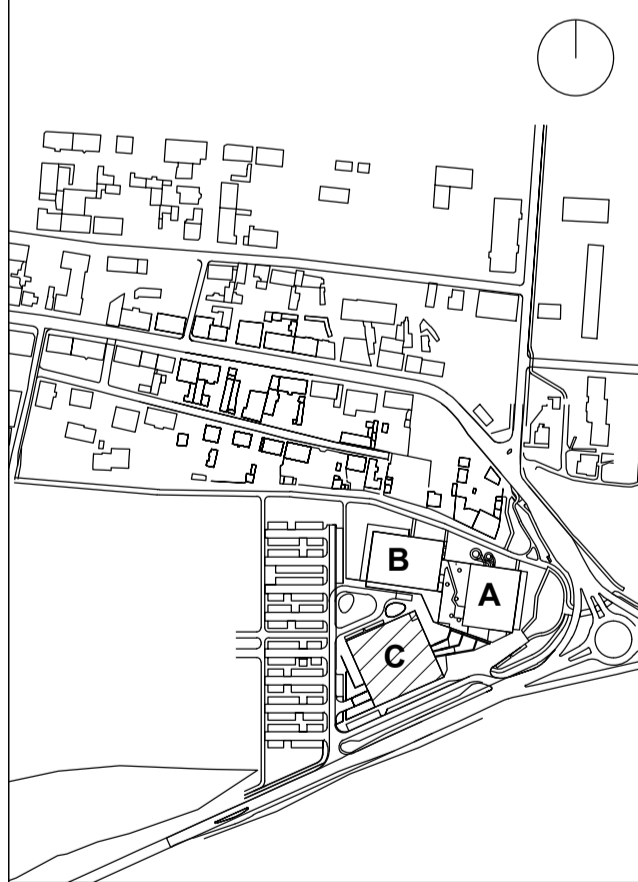
**245-PW-KON-EA-RZU-RF-1025-A0**

# PROJEKT WYKONAWCZY

**PIEKARY SŁĄSKIE**  
**UL. SOLIDARNOŚĆ**



**MATEJKO I PARTNERZY**  
Biuro Konstrukcyjne Miłosław Matejko  
ul. Tęczowa 13  
53-601, Wrocław  
tel.: 0048 71 345 07 60  
e-mail: mip@mip.wroclaw.pl



BRANŻA	SKALA	DATA
KONSTRUKCJA	1:100	05/07/24
	ROZMIAR ARKUSZA	
	594x841	

TYTUŁ RYSUNKU  
Drabiny techniczne  
D-1, D-2.

**245-PW-KON-EA-RZU-ZZ-1033-A0**